

Deluxe Stunning Value Clean Big View Private Owner



Contact Name: mark or bobbi

Phone: (604) 737-2228

Website: http://www.resortac.com/listing_487.html

Neighbourhood: Whistler Creek

Property Type: Townhouse/Condo

Room Configuration: 3 Bedrooms

Priced From: n/a

Minimum Nights: 3

Bathrooms:

Baths Full: 3

Ensuites Full: 2

Beds:

Queen: 2

Single: 4

Floor Mattress: 2

Maximum 10

Occupancy:

Pricing Notes: From \$300 Canadian - - ALL INCLUSIVE (no hidden charges).

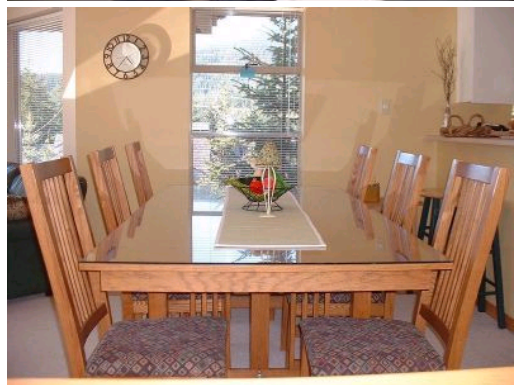
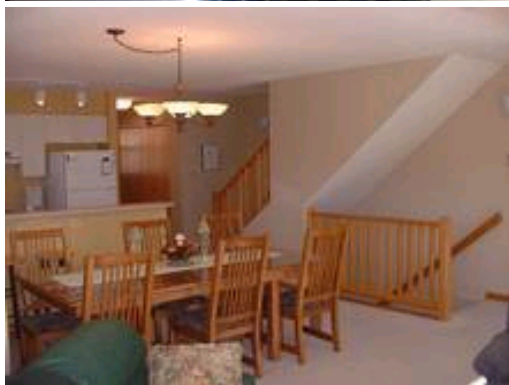
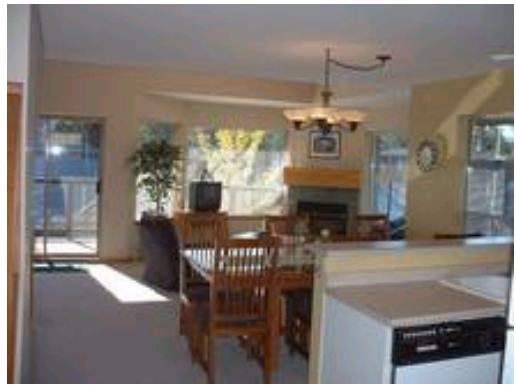
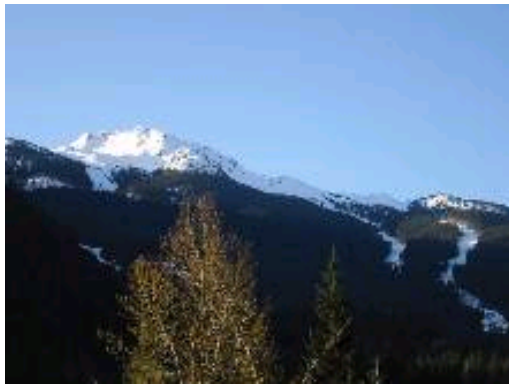
Property Amenities: Wood Fireplace, Golf Nearby, Nice View, Garage, Water Nearby, Balcony, Storage, Near Bus, BBQ

Amenities:

Room Amenities: Television, VCR, CD Player, Cable, DVD, Radio, Internet Access, Iron, Ironing Board, Washer/Dryer, Fridge, Coffee Maker, Silverware, Stove, Toaster, Wine Glasses, Sharp Knives, Dishwasher, Dishes, Microwave, Pots & Pans, Condiments

Description:

- DELUXE & SPACIOUS, 1600 sqft., townhouse - 3 minutes to lifts (situated directly in between Whistler Creekside lifts & Village/Blackcomb lifts) - EXTREMELY desired location!! - 3 BIG BEDROOMS + 3 FULL BATHROOMS! Very comfortable beds, bedding & towels - all provided. - TASTEFULLY FURNISHED, cozy fireplace, all appliances, insuite laundry, mud room, vaulted ceilings, 2 big decks. - SPECTACULAR MOUNTAIN & SKI SLOPE VIEWS! - EXTREMELY CLEAN & WELL MAINTAINED. - 4 singles/cots in one large bedroom with queen beds in the other 2 bedrooms + 2 twin foamies to go wherever you like. CD player, stereo, 2 TV's, VCR, 2 DVD's, Nintendo for the kids, lots of games for adults & kids alike. - 2 parking included. - VERY QUIET - GREAT SLEEPS - nothing worse than skiing all day and trying to get some rest while 'Village club-goers' hoot-holler all night long! We are extremely quiet!!! - Guests return over and over again. Let us help make your next getaway JUST PERFECT! - See: www.whistlerresidence.com



Availability Calendar
(Click on month for details)

January 2010							February 2010							March 2010						
Sun	Mon	Tue	Wed	Thu	Fri	Sat	Sun	Mon	Tue	Wed	Thu	Fri	Sat	Sun	Mon	Tue	Wed	Thu	Fri	Sat
					1	2		4	2	3	4	5	6		1	2	3	4	5	6
3	4	5	6	7	8	9	7	8	9	10	11	12	13	7	8	9	10	11	12	13
10	11	12	13	14	15	16	14	15	16	17	18	19	20	14	15	16	17	18	19	20
17	18	19	20	21	22	23	21	22	23	24	25	26	27	21	22	23	24	25	26	27
24	25	26	27	28	29	30	28							28	29	30	31			
31																				

April 2010	May 2010	June 2010
------------	----------	-----------

Sun	Mon	Tue	Wed	Thu	Fri	Sat
				1	2	3
4	5	6	7	8	9	10
11	12	13	14	15	16	17
18	19	20	21	22	23	24
25	26	27	28	29	30	

Sun	Mon	Tue	Wed	Thu	Fri	Sat
						1
2	3	4	5	6	7	8
9	10	11	12	13	14	15
16	17	18	19	20	21	22
23	24	25	26	27	28	29
30	31					

Sun	Mon	Tue	Wed	Thu	Fri	Sat
		1	2	3	4	5
6	7	8	9	10	11	12
13	14	15	16	17	18	19
20	21	22	23	24	25	26
27	28	29	30			

July 2010						
Sun	Mon	Tue	Wed	Thu	Fri	Sat
				1	2	3
4	5	6	7	8	9	10
11	12	13	14	15	16	17
18	19	20	21	22	23	24
25	26	27	28	29	30	31

August 2010						
Sun	Mon	Tue	Wed	Thu	Fri	Sat
1	2	3	4	5	6	7
8	9	10	11	12	13	14
15	16	17	18	19	20	21
22	23	24	25	26	27	28
29	30	31				

September 2010						
Sun	Mon	Tue	Wed	Thu	Fri	Sat
			1	2	3	4
5	6	7	8	9	10	11
12	13	14	15	16	17	18
19	20	21	22	23	24	25
26	27	28	29	30		

October 2010						
Sun	Mon	Tue	Wed	Thu	Fri	Sat
				1	2	
3	4	5	6	7	8	9
10	11	12	13	14	15	16
17	18	19	20	21	22	23
24	25	26	27	28	29	30
31						

November 2010						
Sun	Mon	Tue	Wed	Thu	Fri	Sat
	1	2	3	4	5	6
7	8	9	10	11	12	13
14	15	16	17	18	19	20
21	22	23	24	25	26	27
28	29	30				

December 2010						
Sun	Mon	Tue	Wed	Thu	Fri	Sat
			1	2	3	4
5	6	7	8	9	10	11
12	13	14	15	16	17	18
19	20	21	22	23	24	25
26	27	28	29	30	31	